


GLCD Module 1 Premiere and Insight to Module Development Process

Wednesday, May 5, 2021 | 12:00-12:30 CST



1






TEXAS A&M UNIVERSITY
 Presidential Transformational Teaching Grants Program, Round 1



United States Department of Agriculture

Higher Education Challenge (HEC) Grants Program, grant no. 2020-70003-32313



2


Module 1 Curricula Packages

Instructor-Facilitated Module (IFM)

- Instructor guide with full written curriculum
- PPT slides with lecture notes
- Introductory video
- Assignments
- Handouts
- Answer keys & grading rubric

Online Module: IFM plus...

- Online module instructor guide
- Additional short videos
- Engaging infographics
- Immediate question feedback
- Built-in grade for LMS use
- SCORM Compliant



3

Module 1 Instructor Guide (IFM)

Module Facilitation Guide: An Introduction to International Development Through a Gender Lens (M1)

1. **Introduction:** This module is designed to provide a comprehensive overview of the gender lens in international development. It covers the historical context, current trends, and the role of gender in sustainable development.

2. **Learning Objectives:** By the end of this module, participants should be able to: identify the gender lens in international development; understand the historical context of gender in development; and apply the gender lens to various development contexts.

3. **Key Concepts:** Gender equality, women's empowerment, gender mainstreaming, and the Sustainable Development Goals (SDGs).

4. **Activities:** Interactive exercises, case studies, and group discussions to explore the gender lens in development.

5. **Assessment:** A final quiz to evaluate understanding of the module content.

Module Facilitation Guide: M1 Content

Module 1: Introduction to International Development Through a Gender Lens

1.1. The Gender Lens in International Development

1.2. Historical Context of Gender in Development

1.3. Current Trends and the Role of Gender in Sustainable Development

1.4. Key Concepts and Terminology

1.5. Applying the Gender Lens to Development Contexts

Module Facilitation Guide: M1 Activities

Activity 1: Gender Equality in the Workplace

Activity 2: Women's Empowerment in Rural Development

Activity 3: Gender Mainstreaming in Policy Making

Activity 4: The Role of Gender in Sustainable Development Goals


4

Authorship Tracking

Category	Authorship Notes	Author	Personnel	Module 1	Module 2	Module 3
Author	Provide initial draft and all subsequent revisions. Complete all revisions. Submit final draft. Writing style: APA 7th Edition.	Darlene Philpot, Camille Benson	Benson, Rupe	Benson, Robertson	Philpot	
SRE	Conduct critical review and comment on all drafts from initial author draft based on best practices and prior research. Provide additional resources as deemed needed to support instructional goals. Writing style: APA 7th Edition.		Leslie Rupe	Robertson		
Subject Reviewer	Provide critical review, commentary, and revision instructions of materials after SRE contributions and authoring. Writing style: APA 7th Edition.		Larson S. Robertson	Crump S. Larson		
Internal Reviewer	Provide critical review, commentary, and revision. Support management and coordination responsibility for planning and execution of research and writing activities.	Audra Richburg, Courtney Boldt	Philpot, Richburg & Boldt	Richburg & Boldt		
Project Leads	Provide oversight, management, leadership, and coordination. Responsible for research, authoring, and revision. Coordinate all funding acquisition. Provide administrative, logistical, and financial support. Writing style: APA 7th Edition.	Dr. Manuel Piña, Dr. Theresa Murphy	Piña S. Murphy	Piña S. Murphy		
Project Advisory Committee	"Project Advisory Team Members from multiple institutions significantly advanced the success of this project from initial conceptualization and funding acquisition to formal analysis and publication. We appreciate the work and contributions made by each member." (Conceptualized)		Use standard acknowledgement level(s)	standard	standard	
Evaluation	Use rubric for data analysis. Initial analysis completed. Writing style: APA 7th Edition.	Melinda Garcia	Garcia	Garcia		

Suggested citation: Piña, M., & Murphy, T. P. (2021). *Gender Curricula for Development*. **Module 1**. <https://genderlensdev.tamu.edu/materials/>

Attribution and Acknowledgements: The authors wish to thank the following persons for their contributions to this module: Dr. Raymond Robertson (subject matter expert); Drs. Amanda Crump and Becki Lawler (subject reviewers); Audra Richburg and Courtney Boldt (internal reviewers and instructional designers); and Dr. Melinda Garcia (evaluator). Additionally, Project Advisory Team Members from multiple institutions significantly advanced the success of this project, from initial conceptualization and funding acquisition to formal analysis and publication. Members include Dr. Raymond Robertson, Dr. Sylvia Hamie, Dr. Reyko Huang, Dr. Valerie Hudson, Dr. Rebecca Lawler, Dr. Amanda Crump, Dr. Mary Rodriguez, Dr. Leslie Rupe, and Dr. Hannah Russell. We appreciate the dedication and contributions of each member.




5

Example: Citation & Acknowledgements

To cite this module or its included content, use: Benson, C., Robertson, R., Piña, M., & Murphy, T. P. (2021). The power of education in reaching strategic needs for women (Module 8). *Gender Lens Curricula for Development (GLCD)*. <https://genderlensdev.tamu.edu/materials/>

Acknowledgements: The authors wish to thank the following persons for their contributions to this module: Dr. Raymond Robertson (subject matter expert); Drs. Amanda Crump and Becki Lawler (subject reviewers); Audra Richburg and Courtney Boldt (internal reviewers and instructional designers); and Dr. Melinda Garcia (evaluator). Additionally, Project Advisory Team Members from multiple institutions significantly advanced the success of this project, from initial conceptualization and funding acquisition to formal analysis and publication. Members include Dr. Raymond Robertson, Dr. Sylvia Hamie, Dr. Reyko Huang, Dr. Valerie Hudson, Dr. Rebecca Lawler, Dr. Amanda Crump, Dr. Mary Rodriguez, Dr. Leslie Rupe, and Dr. Hannah Russell. We appreciate the dedication and contributions of each member.



6

Content Development Team – Module 1

Project Manager and Content Developer:
Danette Philpot

Author:
Carmen Benson

Author and Subject Matter Expert:
Leslie Ruyle

7

Other Contributors – Module 1

Reviewer: Raymond Robertson

Reviewer: Rebecca Lawver

Evaluator: Melinda Garcia

Amanda Crump
UC-Davis

Mary Rodriguez
Ohio State University

Valerie Hudson
TAMU

Reyko Huang
TAMU

Leslie Ruyle
TAMU

Hannah Russell
Independent Consultant

Gary Briers
TAMU

Silva Hamie
TAMU

8

Instructional Design Team

Audra Richburg

Kortney Boldt

Indah Rahmadina

Amanda Yates

Being Recruited

9

Process Support: Science Communications Lab

scicomm.tamu.edu

Process Support: Science Communications Lab
scicomm.tamu.edu

Fueling the Mind, Feeding the World: Enhancing Communication and Decision-Making Skills of Secondary Agricultural Education Students

Available Topics

- Identify and Analyze Problems: The Four Steps of Decision Making
- Module 1: Asking Effective Questions
- Module 2: Communicating Appropriately and Professionally

10

Process Support: Science Communications Lab

scicomm.tamu.edu

Communicating in Writing: Teaching Guide

KEY

Professionalism using Social Media

11

From Ideas to the Content Outline

Identify topics

Organize topics into modules

Expand topics (by module) into content outlines using:

- Personal lived experiences
- Books
- Scientific articles

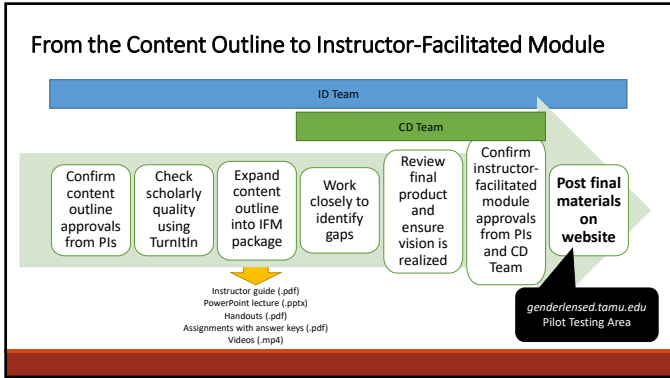
Work with SMEs to refine and finalize content outlines

Content Development Team

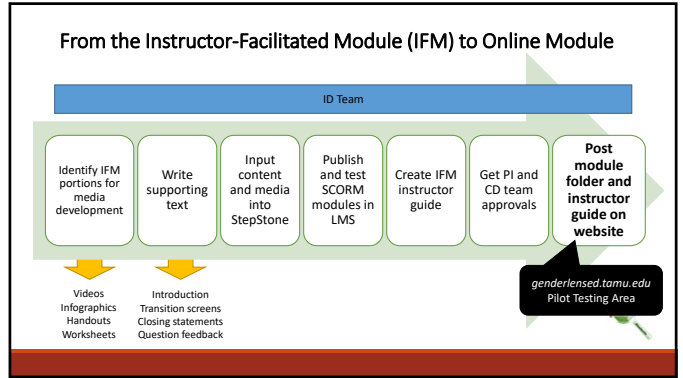
Project Advisory Team

Subject Matter Experts (SMEs)

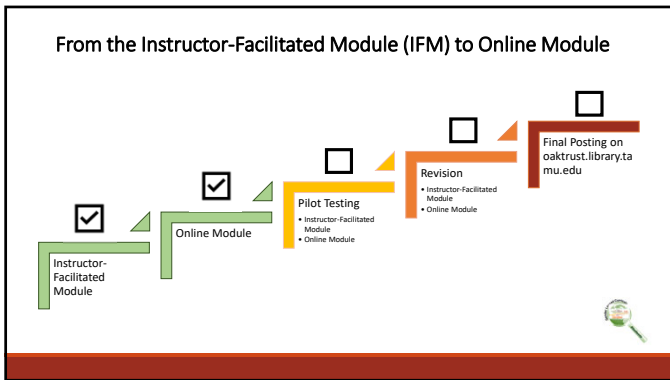
12



13



14



15

Module 1 Materials (IFM)

Assignments

Handouts

Video

Lecture Slides

105 girls in extreme poverty for every 100 boys

16

Gender Lensed Curricula in Development

Gender Lensed Curricula in Development

Gender inequity affects the lives of people across the world - in the US, in Europe, in Asia, in Africa, and in the developing world. This course illuminates the roles that women across the world play in personal, local, national, and environmental security.

After completing this module, you should be able to:

1. Define the terms related to gender and international development, including gender, sex, inequality, power, intersectionality, and international development.
2. Compare and contrast theoretical approaches to gender and international development, including feminist theory, liberal feminism, and intersectional feminism, and their implications for gender and international development.
3. Explain the gender inequality continuum and how development programs can be designed along the continuum, using the gender lens of gender and international development.

Click the video on this page to listen to a recording of the speaker.

Additionally, handout 1.2 contains a full version of the gender lens for business and gender to read.

17

Gender Lensed Curricula in Development

Multiple Choice Question 1 of 5

This theoretical framework related to gender and international development is rooted in **modernization theory of development**.

Choose the best option:

- Gender and Development
- Women and Development
- Women in Development
- Gender and Development

18

Online Module Access

Password Protected

- Available topics
- How-to video

genderlensed.tamu.edu/materials

19

Demonstration of Module 1

Screen Share

20

Stay tuned for the Faculty Training
in 1 Week!

Register at genderlensed.tamu.edu/

21